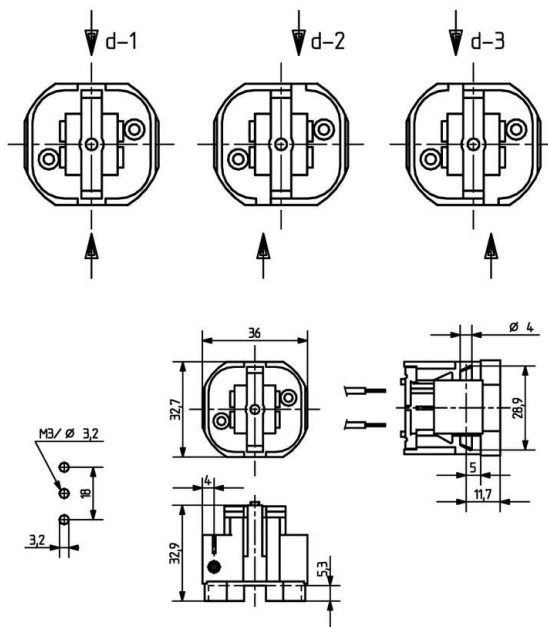
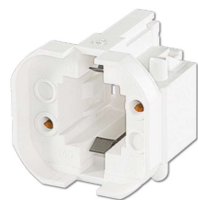




Lampholders for compact fluorescent lamps

26.725.2003

G24 / GX24



colour	pkg.	wt.	part no.
white	250	14 g	26.725.2003.50

Key: d-3 (26 / 32 Watt)





Approval: additional cULus

For lamps TC-D, TC-T

Screw fixing vertical, central

Housing: PBT

- Screw fixing central, vertical: one hole \varnothing 3.2 mm and 2 anti rotation slots
- Panel cut-out: three holes $2 \times 9 = 18$ mm, for screws ISO 20 - M3
- Lampholders with pivote pins for use with support 26.920

T 140				
		0.5 - 1.0 mm ²	max. ø 1.8 mm	18 AWG 0.5 - 1.0 mm ²

Document generated on: Th, 9. February 2017 - 15:05